



## Server Passwords

### Table of Contents

Introduction.....	2
Creating a Sign-In Password.....	2
Entering the Password in the Task Scheduler.....	4

## Introduction

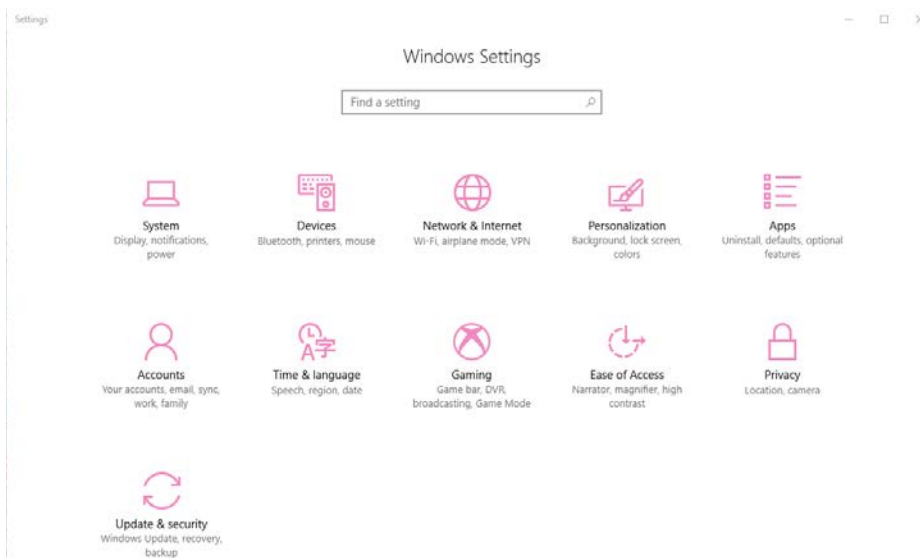
The Windows® 10 update now requires passwords in areas where it did not previously, such as the Windows Task Scheduler. This new requirement is stopping previously scheduled tasks such as SQL backups, TX, TPW, and scheduled postcards. Therefore, each server running these tasks must have a password and the password must be included in all scheduled task setups. This document explains the steps for that.

## Creating a Sign-In Password

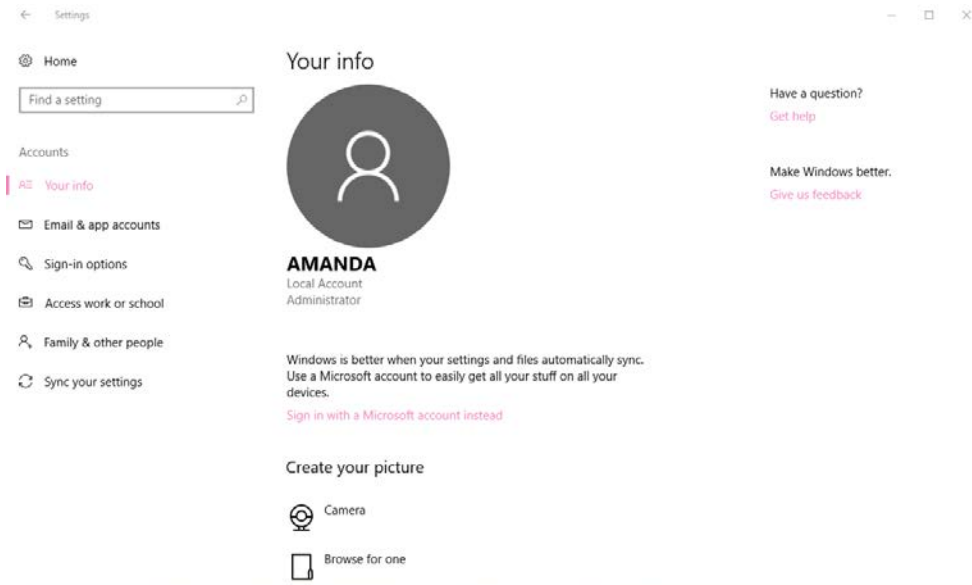
If you do not have a sign-in password on your server, you will first need to create one. If you already have a sign-in password on the server, skip to the section entitled Entering the Password in the Task Scheduler.

To create a sign-in password:

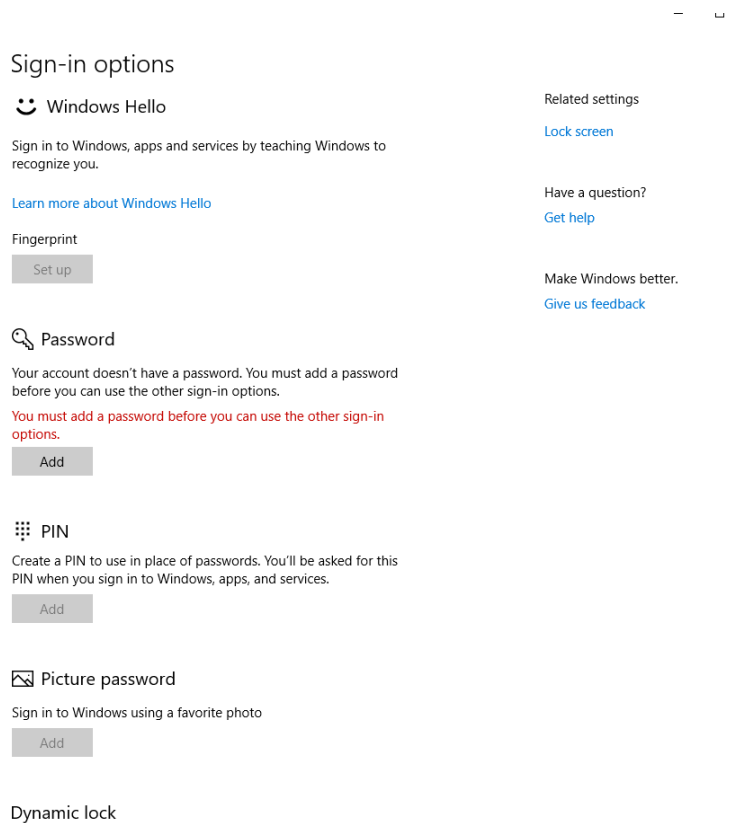
1. Go to your computer's **Settings** by right clicking on the Windows button in the bottom left corner of the Windows desktop and then clicking on **Settings**. The **Windows Settings** window will appear.



2. Select **Accounts**. The **Accounts** area of **Settings** will appear.



3. Select **Sign-in options**. The **Sign-in options** window will appear.

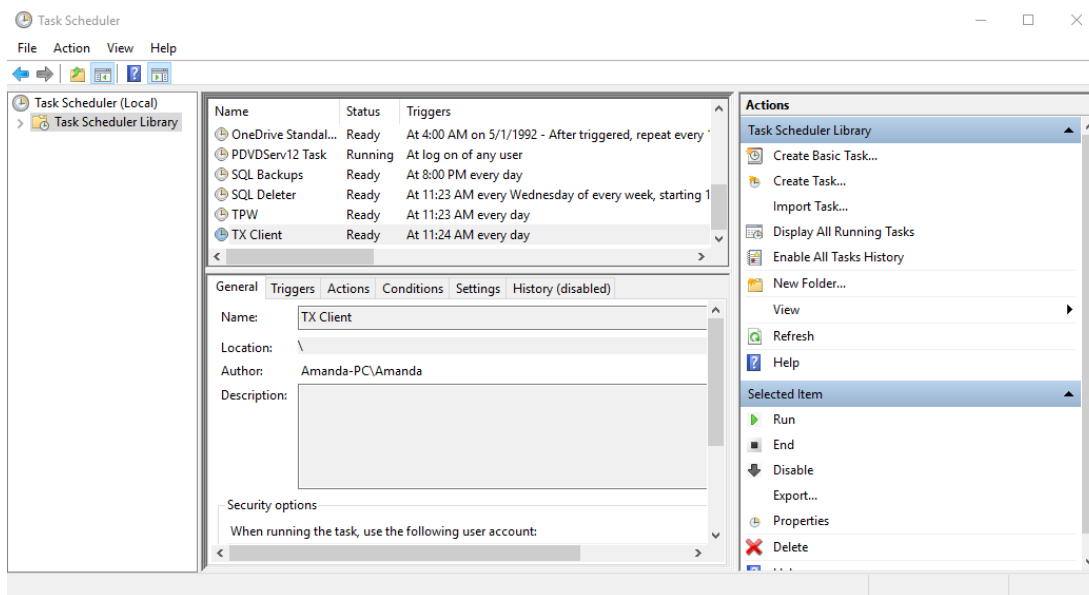


4. Under the **Password** option, select **Add**.
5. Follow the prompts to create a sign-in password for the server.

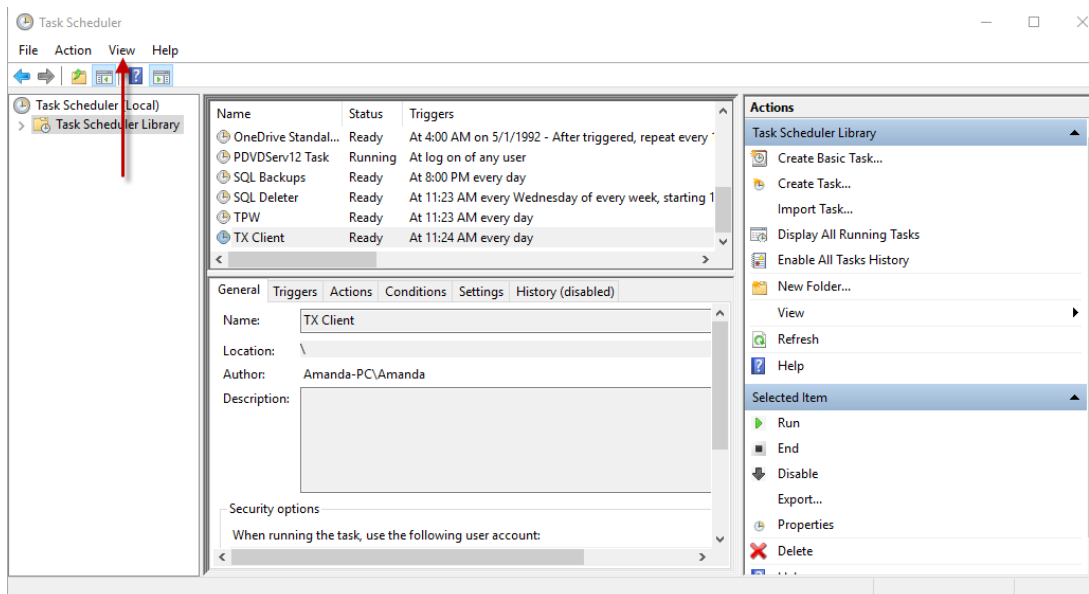
## Entering the Password in the Task Scheduler

Once this password is created, you must make changes in the Task Scheduler for each task. To do so:

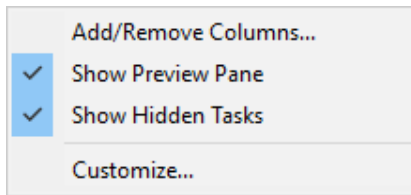
1. In the **Search** field next to the Windows button at the bottom of the Windows desktop, type in Task Scheduler. It should open automatically.



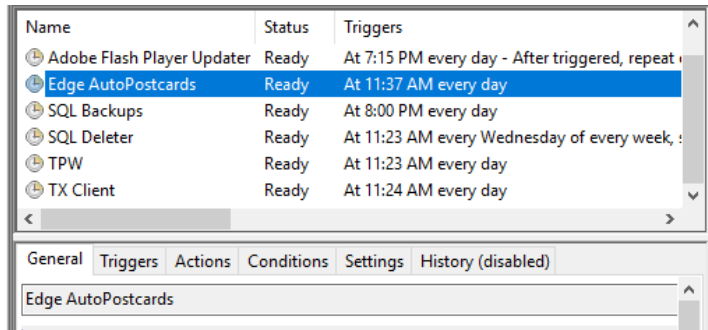
2. Once the Task Scheduler opens, from the left navigation pane, select **Task Scheduler Library**.



3. Select the **View** menu.



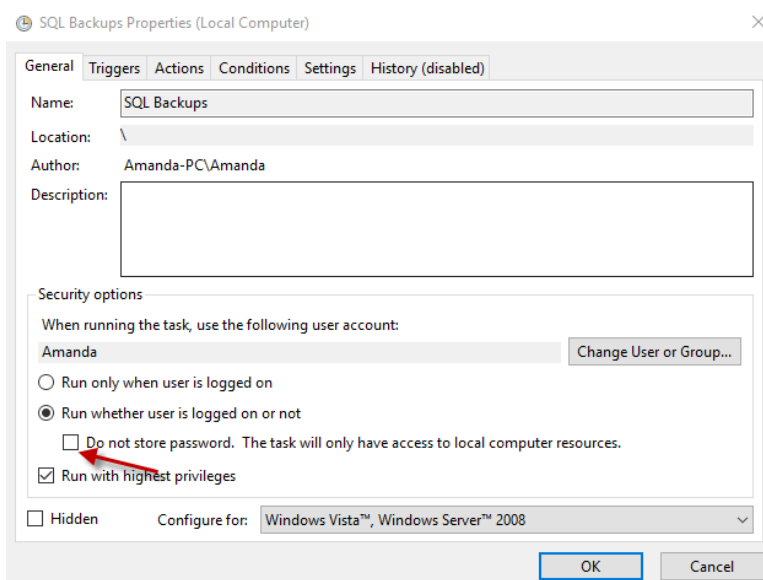
4. Make sure that the **Show Hidden Tasks** option is checked.
5. In the library list, you may see any combination of the following task names:



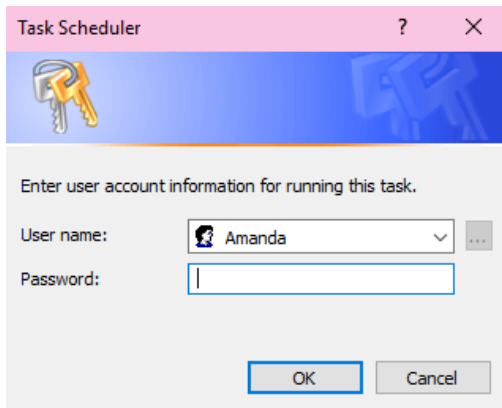
Others may include:

- TxPhoto Client
- EdgeSQLBackups

6. For the each task that pertains to The Edge, double click on the task to open it and uncheck the **Do not store password** option.



7. Select **OK**. The **User account control** window will appear.



8. Enter your password in the password field and select **OK**.
9. The screen will revert back to the **Task Library**.
10. Repeat steps 6-9 for each Edge task.
11. You do not need to reboot your computer after completing these steps.