

CipherLab 1564A Scanner - Setup

Introduction

This document explains how to set up and program the **CipherLab 1564A Bluetooth Scanner** for use with The Edge using Bluetooth.

Programming

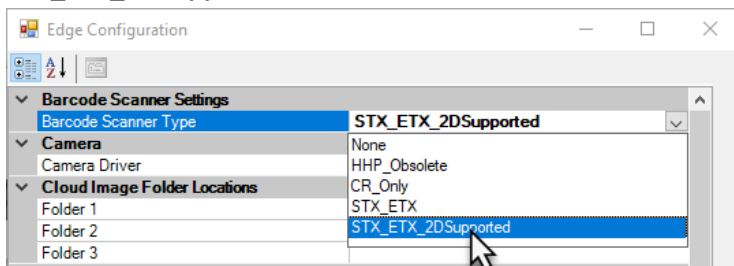
To program the scanner, scan this QR code:



Configure The Edge

In The Edge:

1. Click **Administrative > Configuration**.
2. In the **Barcode Scanner Settings** section, use the drop-down to set **Barcode Scanner Type** to **STX_ETX_2DSupported**.



3. Click **OK** to save changes.

The scanner is now configured. If you already paired it with your computer, you can start using it. Test it by scanning Edge items and envelopes. You can also test scanning a driver's license on the Customer Add screen.

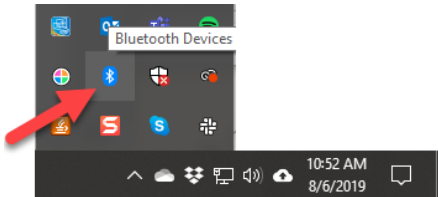
If you have not yet paired it, see the next section.

Add Bluetooth Device

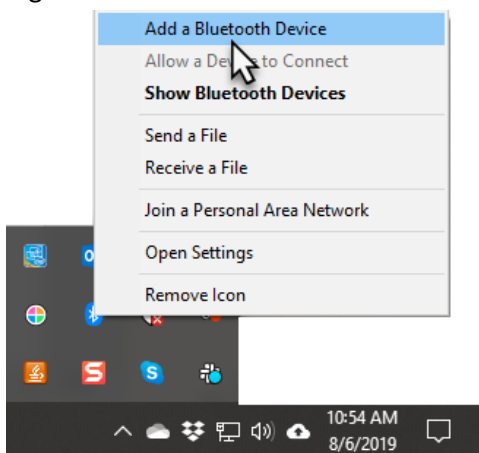
IMPORTANT: This is only required if you have not already paired the scanner with your computer.

To connect the scanner to your computer:

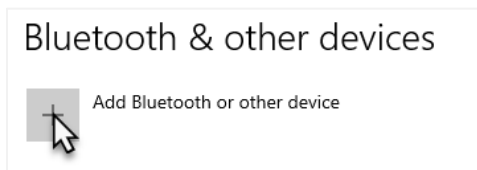
1. Turn on the scanner.
2. Open the **Windows System Tray** (by date/time) and locate the **Bluetooth** icon.



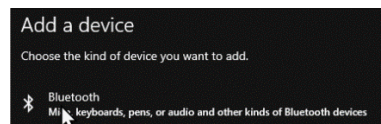
3. Right click on the **Bluetooth** icon and select **Add a Bluetooth Device**.



4. Click **+ Add Bluetooth or other devices** at the top of the window.



5. Click **Bluetooth**.



6. Allow it to scan for available devices. The scanner will appear in this list starting with the numbers **1564**. Click on it to connect. Once successful, it will display as **Paired**.



Note: If it asks for a PIN use 0000.