

# Item Detail Wizard

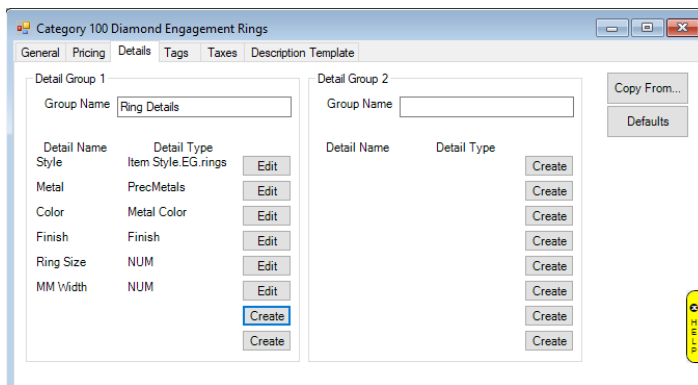
## Overview

The **Item Detail Wizard** is used to create and edit the customizable details found on every item record. These details are managed from the **Category** record's **Details** tab. Note that this wizard replaces the previous manual method of detail management.

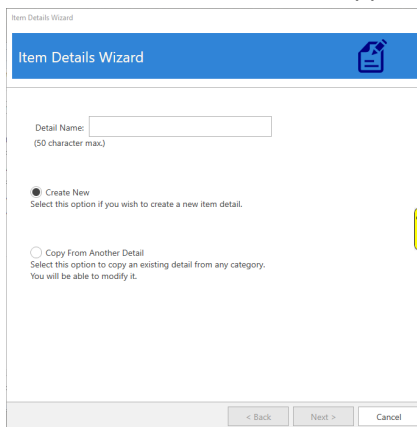
## Creating a New Detail

To create a new detail:

1. Click **Inventory > Categories > List** and **Edit** the category.
2. Click on the **Details** tab.



3. There are 16 available details. Unused detail fields will display with a **Create** button while existing details will show an **Edit** button. To create a new detail, select an available position and click **Create**.
4. The **Item Detail Wizard** will appear.



5. Specify a **Detail Name** (e.g. Metal), select **Create New**, and click **Next**.
6. Select a **Detail Type**:

**Number** Text box that only accepts numbers.

**Dollar** Text box that only accepts numbers and displays as currency.

**Text** Text box that accepts any input.

**List** Links this detail to a list of predefined choices.

7. Check **Required** if this detail must be filled in on items entered into this category.
8. If selecting a **List**, you must choose whether you want to **Create a New List** now or link to an **Existing List**.

9. If selecting a **List**, check **Must Match List** if this detail can only contain entries from the list. If unchecked, associates will be able to pick from the list OR enter any text they want.
10. **Storage Field** assigns the internal database storage. It is only necessary to change this if linking this detail to one of the software's searchable fields found on the **Item Filter**.

11. Click **Next** to continue.
12. For types **Number**, **Dollar**, or **Text**, the wizard has been completed and detail created.
13. For the type **List**, if you selected **Create New List** the next screen allows you to create your list of choices.

Short Value	Long Value
14k	14k
18k	18k
SS	Sterling Silver
S	Silver

14. If you selected **Existing List** instead, use the drop-down to choose which list to use.

15. After selecting a **List**, choose one of the **Modify** options at the top:

**Modify for All Categories**

Making changes to the list entries will affect all category details linked to this list.

**Modify List for the Selected Category**

Making changes to the list entries will only affect the selected category. Other categories will be unaffected.

16. Click **Next**. Make any desired changes to the list values and then complete the wizard to create the detail.

## Copying a Detail

Details can be copied from one category to another. There are two methods available:

### From the Wizard

To copy a detail using the wizard:

1. Click **Create** next to the detail to open the wizard.
2. Choose **Copy From Another Detail**.
3. Select which **Category** to copy from and then use the **Name** drop-down to select which detail to copy.
4. Complete the wizard.

### From Category Record

Details can be copied and applied to other categories directly from the category record. To do so:

1. Click **Inventory > Categories > List** and **Edit** the category that you wish to copy details from.
2. Click **Copy To** at the bottom.
3. Use the drop-down at the top to select which categories to copy to, then select which details you wish to copy to them.

4. Click **Copy**.

## Editing a Detail

To edit an existing detail:

1. Click **Inventory > Categories > List** and **Edit** the category.
2. Click on the **Details** tab.
3. Click the **Edit** button next to the detail you wish to change.
4. Select **Edit** and click **Next**.
5. **Editing** a detail follows the same workflow as creating a new detail; review the above section on **Creating a Detail** to make changes.

## Deleting a Detail

To delete an existing detail:

1. Click **Inventory > Categories > List** and **Edit** the category.
2. Click on the **Details** tab.
3. Click the **Edit** button next to the detail you wish to delete.
4. Select **Delete** and complete the wizard to remove the detail.